

2035 Plan Cost Affordable Projects

2035 Long Range Transportation Plan Cost Affordable Projects (Adopted 12/9/2009)

Transit Projects

By 2015	<ul style="list-style-type: none"> ▪ Increase frequency on local bus routes, add trips on express routes, and expand service hours ☺ ▪ New Metro Rapid bus route along Nebraska Ave and Fletcher Ave ☺
By 2035	<ul style="list-style-type: none"> ▪ Bay Area Commuter Services (BACS) Ride Sharing and vanpool ▪ Improve park-and-rides, improve access, replace bus stops and shelters ☺ ▪ New Metro Rapid bus route on Fletcher Ave ☺ ▪ New express routes connecting USF and Temple Terrace to Westshore, Brandon, and Citrus Park ▪ New regional bus on I-75 to Downtown Tampa and Brooksville ▪ Rail from Downtown Tampa to USF, with extensions to Wesley Chapel ☺ ▪ New flex routes (see map for service areas) ☺

Highway Projects *"Enhancements" include turn lanes, smart traffic signals, and bike/ped/bus stop improvements*

By 2015	<ul style="list-style-type: none"> ▪ 22nd St enhancements from Club Dr to Fletcher Ave and Riverhills Dr to Fowler Ave ▪ Add 2 lanes on Bruce B Downs Blvd from Bearss Ave to Palm Springs Blvd and Pebble Creek Dr to County Line Rd ☺ ▪ Add 4 lanes on Bruce B Downs Blvd from Palm Springs Dr to Pebble Creek Dr ▪ Add 2 lanes on Cross Creek Blvd from Cory Lake Isles to Morris Bridge Rd ☺ ▪ I-275 Advanced Traffic Management System from Bearss Ave to I-75 ▪ Add 2 lanes on I-275 from north of US 41 to the proposed East/West Rd ▪ I-75 Advanced Traffic Management System from Fowler Ave to I-275 ▪ Add 2 lanes on I-75 from Fowler Ave to north of Bruce B Downs Blvd ▪ New 4 lane road (New Tampa Blvd) from Commerce Park Blvd to Meadow Pine Dr ▪ New 4 lane road (Telecom Pkwy Extension) from Arbor Isle Dr to Morris Bridge Rd ☺ ▪ New 2 lane roads in Downtown Temple Terrace ☺
By 2035	<ul style="list-style-type: none"> ▪ Add 2 lanes on I-75 from north of Bruce B Downs Blvd to south of SR 56 ▪ New 2 lane road (Meadow Pointe Rd) from Oak Preserve Blvd to Pasco County Line ▪ New 4 lane road (Oak Preserve Blvd) from Kinnan St to Morris Bridge Rd ▪ Add 2 lanes on US 301 from Tampa Bypass Canal to Fowler Ave ▪ Countywide Advanced Traffic Management System improvements* ▪ Countywide Traffic Management Center
After 2035	<ul style="list-style-type: none"> ▪ Add 4 special-use lanes on I-75 from north of I-4 to south of Fowler Ave**

Bikeway and Trail Projects

By 2035	<ul style="list-style-type: none"> ▪ Add bicycle lanes on Fletcher Ave from North Blvd to 22nd St ☺ ▪ Add bicycle lanes on Whiteway Dr from 50th St to Riverhills Dr ▪ Mark bicycle route on Druid Hills Rd from 50th St to Riverhills Dr ▪ Mark bicycle route on Ridgedale Rd from Druid Hills to Riverhills Dr ▪ Pave shoulders on 50th St from Druid Hills to Fowler Ave ▪ Temple Terrace Multi-use trail from Temple Terrace Hwy to Railroad Park ☺
---------	---

Pedestrian Projects

By 2035	<ul style="list-style-type: none"> ▪ 56th St pedestrian safety enhancements from Bullard Pkwy to Fletcher Ave ▪ Fletcher Ave pedestrian safety enhancements from I-275 to 56th St ▪ Fowler Ave pedestrian safety enhancements from I-275 to 56th St ▪ Temple Terrace Hwy pedestrian safety enhancements from Morris Bridge Rd to Harney Rd ▪ Fill sidewalk gaps on major road segments where sidewalks are 100% missing
---------	--

☺ Projects may be funded or implemented sooner through a potential sales tax referendum

* Includes technologies like smart signals, traffic cameras, dynamic digital message signs, etc.

** Funding may not include cost of construction

New Tampa, Temple Terrace & USF Area Cost Affordable Projects



Transit Projects

- Local Bus Service**
- Local Bus
 - Circulator Bus
 - Bus Rapid Transit
 - FLEX Service Area

- Express Bus Service**
- Express Bus
 - Regional Bus

- Rail Service**
- Rail

Highway Projects

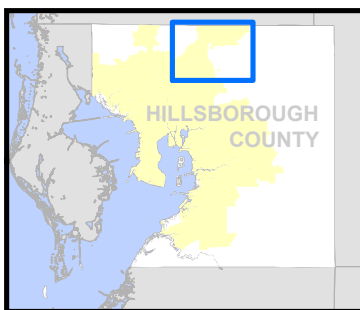
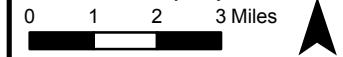
- Roadway Enhancement
- Roadway Widening
- To be Completed After 2035

Bikeway & Trail Projects

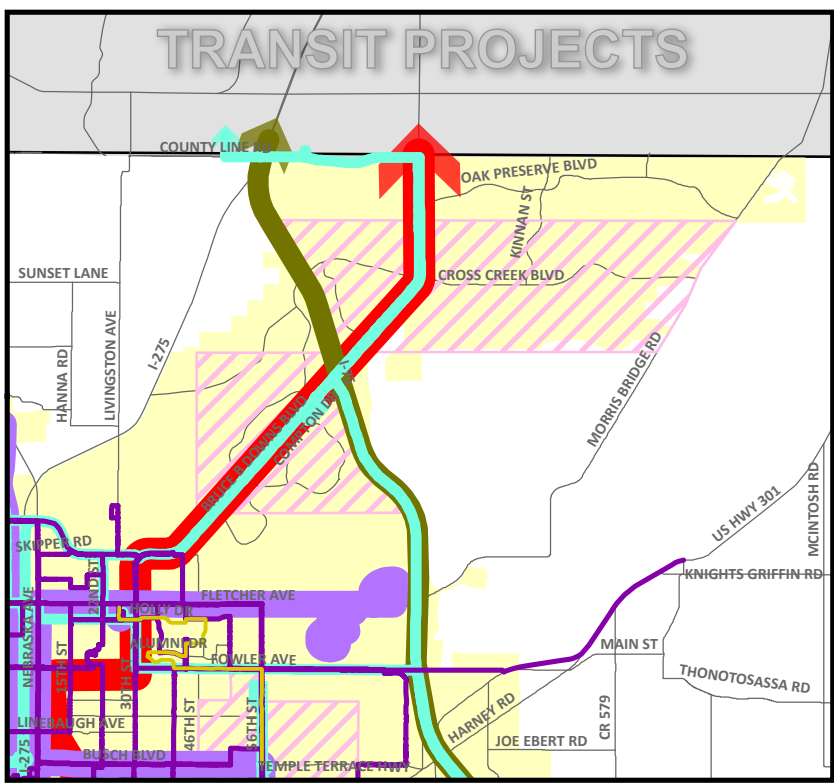
- On-Road Bicycle Facility
- Existing On-Road Bicycle Facility
- On-Road Bicycle Facility Included in Roadway Project
- Trail
- Existing Trail

Pedestrian Projects

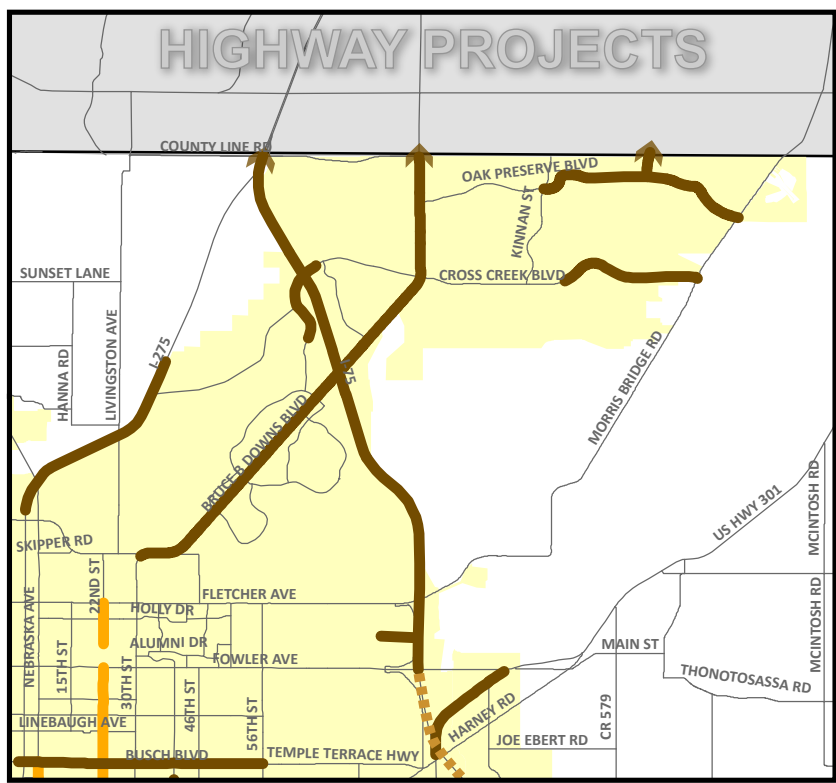
- Sidewalk Improvement
- Safety Enhancement
- Pedestrian Facility Included in Roadway Project



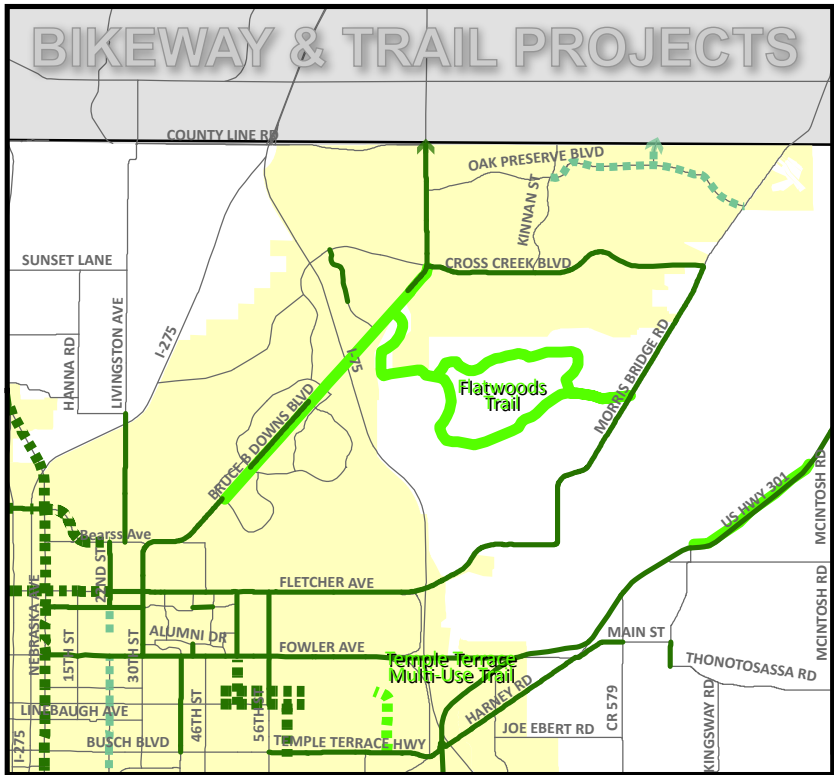
TRANSIT PROJECTS



HIGHWAY PROJECTS



BIKEWAY & TRAIL PROJECTS



PEDESTRIAN PROJECTS

